

X

1001-1259

Gerrit S. Miller

~~L.A. Prindle~~

~~1853-1864~~

==

Duplicates of the following nos. (1 each)

1019	1078	1190
1034	1080	1231
1043	1083	
1045	1092	
1060	1101	
1061	1103	
1069	1109	
1069 ^a	1124	
1075	1169	
1077	1177	

Republic
 arch 23, 1928

ua Feb. 20

Scrub mas
 l.

Samana Bay
 ume, Feb 25

(fruit)

low paper by

(3 sections)

Specify by Number, the Book desired

No. of Leaves	Size	Ruled Faint and Indexed Through	Ruled Faint	Ruled \$ and Cts.
144	"	6571 $\frac{1}{2}$	6570	6572
96	"	6569 $\frac{1}{2}$	6568	6570
48	8 $\frac{3}{8}$ x 5 $\frac{3}{8}$	6565 $\frac{1}{2}$	6566	6569
144	"	6563 $\frac{1}{2}$	6564	6566
96	"	6559 $\frac{1}{2}$	6562	6565
48	7 $\frac{3}{8}$ x 4 $\frac{3}{8}$	6557 $\frac{1}{2}$	6560	6563
144	"	6553 $\frac{1}{2}$	6558	6562
96	"	6551 $\frac{1}{2}$	6556	6560
48	6 $\frac{3}{8}$ x 4 $\frac{1}{2}$	6545 $\frac{1}{2}$	6552	6559
96	"		6550	6557
48	6 $\frac{3}{8}$ x 3 $\frac{3}{8}$		6544	6553
48	5 x 3			6551

Stardard
 Memorandum
 Book



Dominican Republic
Feb. 19 - March 23, 1928

La

~~Punta Romana~~ Romana Feb. 20

1001 Cycad. Scrub near
sea level.

South shore Samana Bay.
Boca del Infierno, Feb 25

- 1002 Piperomia
1003 Passiflora (fruit)
1004 vine
1005 fern
1006 do on densely shaded rock
1007 do
1008 do
1009 do
1010 do
1011 do large (3 sections)
1012 yam
1013 shrub

1001 Zamia media Jacq.

1002 Peperomia macorissiana Tub.

1003 Passiflora murucuja L.

1004 Anthurium scandens (Kubl.)
Engl.

1005

1006 Asplenium dentatum Sw.

1007 ^{Bryopteris domingensis (Sw.) Maxon}
Persicaria punctatum Ell.

1008 Adiantum cristatum L.

1009 Adiantum fragile Sw.

1010 Tectaria heracleifolia (Willd.) Lindb.

1011 Cyclopeltis semicordata (Sw.)
Sw.

1012 Dioscorea polygonoides H.B.

1013

1014 *Zamia media* Jacq.

1015 *Anemia adiantifolia* (L.) Sw.
Det. Palmer July 1930

1016 *Peperomia nizaicensis* C. DC.

1017 *Peperomia tithymaloides* (Vahl) Dietr.

1018 *Eupatorium ageratifolium* DC.

1019 *Ernodea litoralis* Sw.

1020 *Elaphrium simaruba* Rose.

1021 *Psychotria undata* Sw.

1022 *Coccoloba laurifolia* Jacq.

1023 *Rhodopis plasisiliqua* (L.) Urb.

1024

1025 *Passiflora murucuja* L.

1026 *Amyris elemifera* L.

1027 *Peperomia scandens* R. & P.

Boca del Infierno

1014 bycad Feb. 25-

San Gabriel Island

Feb. 28

1015 fern 2 sheets

1016 *Piperomia* (pointed leaf)

1017 do (large leaf)

1018 composite (bush, fruit)

1019 shrub whitish fruit,
narrow leaves (2 sheets)

1020 shrub, no leaves (branch
and fruit).

1021 shrub, small flowers

1022 shrub "wild grape"

1023 pea - crimson flowers

1024 *Piperomia* (long fruit)

Boca del Infierno Feb. 1, 1928

1025 *Passiflora* (crimson flowers)

1026 candle wood

1027 *Piperomia* (small round leaf)

- 1028 *Nephrolepis biserrata* (Sw.) ^{Schott.}
 1029 *Cyclopeltis semicordata* (Sw.) J. Sm.
~~1030 *Psychotria utigi*~~
 1031 *Adiantum cristatum* L.
 1032 *Polypodium pectinatum* L. 2
 1033 *Adiantum melanoleucum* Willd. ^{new for *Herbarium*!}
 1034 *Dorstenia peltata* Spreng
 1035 *Peperomia*
 *1036 *Prescotia oligantha* (Sw.) Lindl.
 1037 (*Epidendrum*) ^{*Hormidium tripterum* (Brongn.) Cogn. Oct. 22. 5/24/30}
 1038 *Epidendrum cochleatum* L.
 1039 *Epidendrum nocturnum* Jacq.
 1040 *Ardisia obovata* Dur.
 1041
 1042 *Prunus myrtifolia* (L.) Urb.
 1043 *Trichilia pallida* Sw.
 1044 *Peperomia tithymaloides* (Vahl) Dietr.

* new for *Hispaniola* in Herb.

Boca del Infierno March 2

- 1028 fern (sori 2 rows)
 1029 do (sori 4 rows) 2 sheets
 1030 do (sori irregular) on tree
 1031 do
 1032 *Polypodium* (mostly dry at this season)
 1033 fern (in narrow rock crevices)
 1034 peltate leaf (in crevices)
 1035 *Piperomia* (on rocks)
 1036 orchid (seprophytic, minute flowers)
 1037 do (on tree, small fruit)
 1038 do do large fruit
 1039 do do long fruit

March 3

- 1040 shrub small berries
 1041 do axillary fruit
 1042 tree cherry like fruit
 1043 do sessile fruit
 1044 *Piperomia* (large)

- 1045 *Linociera domingensis* (Lam.)
Kunze
- 1046 *Costus cylindricus* Jacq.
- 1047 *Alpinia antillarum* R. Sch.
- 1048 *Vittaria lineata* (L.) Sm.
- 1049 *Nephrolepis rivularis* (Vahl) Mett
- 1050
- 1051 ✓ *Dryopteris dentata* (Forsk) C. Chr.
- 1052 ✓ *Dryopteris reticulata* (L.) Lub.
- 1053 *Asplenium cuneatum* Lam
- 1054 *Nephrolepis*
- 1055 *Polypodium costatum* Kunze
- 1056 *Acrostichum aurcum* L.
- 1057 *Asplenium serratum* L.
- 1058 ✓ *Dryopteris domingensis*
(Spreng) Maxon
- 1059 ✓ *Dryopteris*
- 1060 *Phytolacca rivinoides* Kunth
- 1061 *Dalbergia berterii* (P. DC.) Tutin
Bouche
- 1062 *Cynoctonum mitreola* (L.) Britt.
- 1063 *Nepsera aquatica* (Aubl.) Nees

- Bolboche, south side of
Samana Bay, March 4, 1925
- 1045 Tree 30 ft high with gray
bark & white flowers (2 sheets)
- 1046 ? leaves in press, fleshy
fruit in alcohol.
- 1047 do related genus - fruit in alcohol
- 1048 fern? (linear leaf) on tree
- 1049 fern In heavy damp woods
- 1050 do do
- 1051 do do (2 sheets)
- 1052 do large do
- 1053 do do
- 1054 do do
- 1055 do on tree do
- 1056 do very large, in mangrove swamp
- 1057 do oblique fruit in woods
- 1058 do (split frond)
- 1059 do hirsute (2 sheets)
- 1060 *Phytolacca* (2 sheets)
- 1061 shrub, flat pods (2 sheets)
- 1062 *Myrsotis*? In heavy woods
- 1063 low shrub do

* also

Eleocharis capitata (R. Br.)

(Sw) U + M

1064 *Ananthacorus angustifolius*

1065 *Psilotum nudum* (L.) Griseb

1066 *Marcgravia rectiflora* Tr. & Planch.

1067 *Nectandra coriacea* (Sw) Griseb.

1068

1069 *Persicaria punctatum* Ell.

1070 *Vigna repens* (L.) O. Ktze.

1071 *Guzmania lingulata* (L.) Mez.

1072 *Polypodium lycopodioides* L.

1073 *Ipomoea tiliacea* (W.) Choisy

1074 *Pavonia typhalaea* (L.) Cur.

1075 *Eleocharis interstincta* (Vahl) R. Br.

1076 *Gonzalagunia spicata* (Lam.)

1077 *Piper parryanum* Tul. *G. maze*

1078 *Tabebuia maxoni* Urb.

1079 *Clusia rosea* Jacq.

1080 *Exothea paniculata* (Juss.) Radlk.

1081

1082

Bolboche, March 4, 1925

1064 fern, curled edge on tree

1065 parasite on tree - dense woods

1066 shrub do

1067 do

1068 *Polygonum* 2 sheets dense growth several acres

1069 in mangrove swamp

1070 pea, on beach

1071 epiphyte. dense woods

1072 fern on tree

1073 *Ipomoea* on beach

1074 shrub dense woods

1075 *Guercus*? in marsh 2 sheets anthers white

1076 shrub dense woods

1077 *Piper* do

San Gabriel Id. March 6, 1925

1078 shrub (on cliff)

Boca del Infierno March 8.

1079 *Ficus* - tree on cliff (fruit in alcohol)

1080 shrub March 9

1081 do do

1082 pea (red flowers) do

- 1083 *Dalbergia hecastophyllum* (L.) Taut.
 1084 *Solanum torvum* Sw.
 1085 ~~*Solanum torvum* Sw.~~ ^{*Passiflora etipita riparia* (Griseb.) Killip} 4/30
 1086 *Mikania scandens* (L.) Willd.
 1087 *Ipomoea tiliacea* (W.) Choisy.
 1088 *Drepanocladus lunatus* (L.) G.F. Meyer
 1089 *Cydista aequinoctialis* (L.) Miers
 1090 *Stigmatophyllum ovatum* (Cav.) Wray
 1091 *Salmea scandens* (L.) DC.
 *1092 *Neurolaena lobata* (L.) R.Br.
 1093 *Lobelia salicina* Lam.
 1094
 1095 *Clidemia hirta* (L.) O.Don.
 1096 *Dryopteris dentata* (Forst.) C. Chr.
 1097 *Salvia occidentalis* Sw.
 1098 *Piper aduncum* L.
 1099 *Heliotropium indicum* L.
 1100 *Cassia alata* L.

also 1092 *Ipomoea rubra* (Vahl) Willd.

Samana - March 12, 28

- 1083 shrub, on sandy shore 2 sheets
 1084 *Solanum* do
 1085 vine do
 1086 trailing composite do
 1087 *Ipomoea* do
 1088 thorny leguminous shrub
 1089 large flowered vine
 1090 yellow do do

March 13, 28

- 1091 trailing composite - dry ground
 1092 bush do (yellow flowers) 2 sheets
 1093 dry ground
 1094 do
 1095 do
 1096 fern do
 1097 *Scutellaria*? do
 1098 *Piper* slender leaf, near stream
 1099 do
 1100 leguminous tree
 three sheets from one tree

- 1101 *Cyperus laevis* Retz.
 1102
 1103 *Herpestis procumbens* (Mill) ^{Walt.}

- 1104 ✓ *Dryopteris normalis* C. Chr?
 1105 *Asclepias nivea* L.
 1106 *Elephantopus mollis* HBK.
 1107 *Dryopteris poiteana* (Bory) Walt.
 1108 *Isoetis linearis* (Jacq) R.Br.
 1109 *Oncidium variegatum* Sw.
 1110 *Epidendrum difforme* Jacq.
 1111 *Dryopteris megalodus* (Schum) Walt.
 1112 *Salvia occidentalis* Sw.
 1113 *Rhynchosia phaselloides* (Sw) DC
 Leaves - *Rhynchosia phaselloides* (Sw) DC P. DC
 Fruit - *Mucuna urens* DC.
 1114
 1115 *Centrosema plumieri* (Timp) Benth.
 1116 *Passiflora suberosa* L.
 1117 *Passiflora ~~suberosa~~ suberosa* L.
 1118 " *murucuja* L.

Samana March 13, 1925

- 1101 rush near stream
 1102 *Sporobolus* large flower near stream
 1103 near stream - said to have diuretic properties -

March 14, 25

- 1104 fern dry hillside
 1105 *Asclepias* do
 1106 *Elephantopus* do
 1107 fern do
 1108 orchid (fruit only) do on tree
 1109 do flowers do ^{2 sheets} do
 1110 do " (green) do do
 1111 fern do
 1112 *Scutellaria*? do
 1113 bean (small pods) do
 1114 do (large pods) do
 1115 do (knife edge pods) do
 1116 *Passiflora* (small fruit) do
 1117 do (small yellow flower) do
 1118 do (red flower) do

- 1119
 1120 Eupatorium macrophyllum L.
 1121 Ruellia coccinea (L.) Vahl.
 1122 *Fomes australis* (Fr.) Cke.
 1123 Mucuna urens (L.) Fawc.
 1124 Peperomia rotundifolia HBK.
 1125 Anthurium acuite (Jacq) Schott.
 1126 Cyclopeltis semicordata (Sw) J. Sm.
 1127 Hamelia patens Jacq.
 1128 Solanum rugosum Dur.
 1129 Salmea scandens (L.) DC.
 1130 Borreria laevis (Lam) Griseb.
 1131 Hirtella triandra Sw.
 1132 ~~Dryopteris angustifolia (Willd) Nutt.~~
~~Pharus latifolius L.~~
 1133 Dryopteris angustifolia (Willd)
 1134 Sagittaria lancifolia L.
 1135 *Dryopteris patens* (Sw) Kuntze
 1136 *Dryopteris dentata* (Forsk) Cke.
 1137 Guarea trichilioides L.

Samana March 14, 1925

- 1119 Eupatorium? dry hillside
 1120 do (large leaf) do
 1121 ? (red flower) do
 1122 Polyporus - In woods near Town -
Pio San Juan Mch 16, 1925
 1123 large yellow pea River bottom
 1124 Piperomia (very small) do
 1125 (on tree) do
 1126 fern
 1127 small tree
 1128 Solanum 20ft.
 1129 composite vine 20ft
 1130
 1131 small tree
 1132 fern Tectaria sp. ✓
 1133 do
 1134 sagittaria? 2 sheets
 1135 fern
 1136 do
 1137 small tree (fruit)

*1144 also Eleocharis geniculata (L) R.Br.

1138 Lippia dulcis Trevis.

1139 ~~Theophrasta justicoides~~
^{Pothomorphe peltata (L) Miq.}

1140 Pavonia paniculata Cav.

1141 Synedrella nodiflora (L) Gaertn.

1142 Eupatorium microstemon ^{Cav.}

1143 Chaetochloa barbata (Lam) ^{H. & C.}

*1144 Ipomoea cathartica Poir.

1145

1146 Cyperus ferax Rich.

1147 ~~Jussiaea erecta~~
^{Justicia pectoralis Jacq.}

1148 Asclepias curassavica L.

1149 Salvia occidentalis Sw.

1150 Hemiteles horrida (L) R.Br.

1151 Odontosoria aculeata (L) ^{J. Sm.}

1152 Peperomia ^{Det. Friese July 1930} distachya (L) Dietr.

1153 Asplenium abscissum Willd.

1154 Leptochilus cladorrhizans
(Spreng) Maxon.

1155 Pteris kunzeana Ag.

1156 Adiantum fragile Sw.

1157 Asplenium abscissum Willd.

Puerto Rico San Juan March 16, 1928

1138 small white flower ^{Piper} bottom

1139 Piper large leaf ^{small tree} do

1140 Malvaceae small flower do

1141 small yellow flower

1142 composite - white, small

1143 grass

1144 ? Monocot (large)

1145 Juncus?

1146 sedge

1147 Scroph?

1148 Acleris (orange flower)

1149 Scroph?

1150 fern (large)

1151 do (fleshy vine)

March 17, 27

1152 Peperomia (long petiole) ^{lime rock}

1153 fern do

1154 fern ("walking" - no fruiting fronds in large clump)

1155 fern

1156 do

1157 do

- 1158 *Ichnanthus pallens* (Sw) Munro.
 1159 *Tectaria heracleifolia* (Willd) ^{nudlow.}
 1160 *Dryopteris patens* (Sw) Kuntze
 1161 *Diplazium* sp.
 1162 *Dryopteris reticulata* (Willd.)
 1163 *Leptochilus cladorrhizans* (Spreng) ^{Maxon}
 1164 *Dryopteris poiteana* (Bory) Maxon
 1165 *Cyclopeltis semicordata* (Sw) ^{(Spreng.) Maxon}
 1166 *Leptochilus cladorrhizans*
 1167 *Acalypha setosa* A. Rich.
 1168 *Lobelia cliffortiana* L.
 1169 *Eragrostis hypnoides* (Lam) ^{W.P.}
 1170
 1171 *Cyathea arborea* (L.) Sw.
 1172
 1173 *Tectaria* sp. ✓
 1174 *Danaea*
 1175 *Hemitelia horrida* (L.) R. Br.
 1176 *Erythrodia hirtella* (Sw) Fawc. & Rendle
 1177 *Diplazium*
 1178 *Dieffenbachia seguine* (Jacq.) Schott.

- Mio San Juan March 17, 1928
 1158 " " Grass
 1159 - fern
 1160 - "
 1161 - "
 1162 - "
 1163 "
 1164 "
 1165 " 2 sheets
 1166 "
 1167 ? }
 1168 2 } River
 1169 ? } bottom
 1170 liverwort (lime rock)
 1171 tree fern, "camaron"
 30 feet (leaf, stem &c).
 1172 do stem 4ft fronds 15ft.
 1173 fern
 1174 " (thick joints - no fruit)
 1175 "
 1176 *Peperomia* (pointed leaf)
 1177 orchid (damp soil)
 1178 fern
 1179 " mata huero" (fruit in ale)

- 11180 { *Hemitelia horrida* (L.) R. Br.
Calogyne aculeatum Choisy
11181 *Centrosema pubescens* Benth
11182 *Persicaria glabra* G. Maza.
11183 *Adiantum obliquum* Willd.
Lasiacis ligulata H. & C.
11184 ~~*Solanum torvum* Sw.~~
11185
11186 *Polypodium phyllitidis* L.
11187 *Polypodium aureum* L. ✓
11188 *Alsophila microdonta* Desv.
11189 *Oreopanax capitatum* (Jacq.) Dene.
11190 *Peperomia macrorisiana* Tul.
11191 *Peperomia scandens* R. & P.
11192 *Passiflora quadrangularis* L.
11193 *Lycopodium cernuum* L.
11194 *Fevillea cordifolia* L.
11195 *Hemidictyum marginatum*
11196 ✓ *Dryopteris sancta* (L.) Presl.
(W Kuntze)
11197 *Diplazium striatum* (L.) Presl.
(Spreng) Mason &
11198 *Leptochilus cladorrhizans*

- Rio San Juan, March 18, 1928
1180 moon flower river bottom
1181 - Bean - slender pods
1182 - Polygonum - River bottom
1183 - fern wooded hillside 2 sheets.
1184 Slender bamboo; wooded hillside
1185 - Small tree; fruit dried separate
section of trunk
1186 - fern on tree
1187 fern - rootstock separate
1188 Tree fern; stem 10 ft. high
- 2 sheets; section of stem
fruit section from same plant as leaves
1189 heavy vine - little petioles
1190 *Peperomia* hanging from tree
1191 do round leaf
1192 *Passiflora* - large
fruit in alcohol.
1193 *Lycopodium*
1194 vine - small flower
1195 fern large 2 sheets
1196 do 2 sheets
1197 do
1198 do

- 1199 *Dryopteris patens* (Sw) Kuntze
 1200 ✓ *Dryopteris patens* (Sw) Kuntze
 1201 ✓ *Dryopteris poiteana* (Bory) Nutt.
 1202 ✓ *Dryopteris effusa* (Sw) Nutt.
 1203 *Diplazium arboreum* (Willd.)
 Presl.
 1204 *Passiflora rubra* L.
 1205 *Dalbergia berterii* (Poe.) Nutt.
 1206 ✓ *Dryopteris angustifolia* (Willd.)
 Nutt.
 1207
 1208 *Fevillea cordifolia* L.
 1209 *Pilea repens* (Sw) Wedd.
 1210 *Epidendrum cochleatum* L.
 1211 *Ocotea leucoxylon* (Sw) Maza.
 1212 *Hypoxis decumbens* L.
 1213 *Amaranthus* ^{spinosus L.} ~~suberectus Mart.~~
 1214 *Coix lachryma-jobi* L.
 1214 *Dioscorea altissima* Lam.
 1215 " *pilosiuscula* ^{Benth} [H.B.K.]
 1216 *Chamissoa altissima* (Jacq.)

Rio San Juan March 18

- 1199 fern
 1200 do
 1201 do
 1202 do
 1203 do

March 19

- 1204 *Passiflora* (medium) fruit
 in alcohol
 1205 large tree, gray smooth bark
 flat pods
 1206 fern
 1207 do
 1208 vine
 1209 ? on stone in stream
 1210 orchid (fruit)
 1211 large tree
 1212 *Hypoxis*
 1213 *Amaranthus*
 1214 job's tears
 1214 yam (medium) fruit
 in alc.
 1215 do (small)
 1216 vine

- 1217 *Gouania polygama* (Jacq) Aub.
 1218 *Palicourea barbinervis* P. DC.
 1219 *Cupania americana* L.

- 1220 *Chrysophyllum cainito* L.
 1221 ~~*Ruellia coccinea* (L.) Vahl~~
^{*Dryopteris reticulata* (L.) Link.}
 1222 *Dennstaedtia dissecta* (Sw)
 1223 *Diplazium grandifolium* Sw
 1224 *Adiantum pulverulentum* L.
 1225 *Pteris kunzeana* Ag.
 1226 *Leptochilus nicotianifolius*
 1227 *Piper parryanum* (Trel. (Sw) C. Ch.
 1228 *Tournefortia hirsutissima* L.
 1229
 1230 *Psychotria uliginosa* Sw.
 1231 *Pharus parvifolius* Nash
 1232 " *latifolius* L.

- 1233 *Pityrogramma calomelaena* (Link.)
 1234 *Cissampelos caepeba* L.
 1235 *Vitis erosa* L.C. Rich.
 1236 *Passiflora lauriflora* L.

- Mio San Juan Mch. 19, 25
 1217 "water vine" No 1
 1218 small tree yellow flowers
 1219 small tree

- March 20, 25
 1220 "caymito" (fruit yellowish) seeds
 1221 fern (large - 8 ft.)
 1222 fern (do do ±) 2 sheets
 1223 do
 1224 do
 1225 do
 1226 do 2 sheets
 1227 *Piper* dense woods
 1228 large vine flowers (section from base)
 1229 do fruit do dense woods
 1230 ? (red fruit) do
 1231 grass (2 sheets) do
 1232 grass do

- March 21
 1233 silver fern - dry hillside
 1234 vine ("oja raton")
 1235 do
 1236 *Passiflora* flowers in ole.

- Entada gigas (L.) Faw. + Rendle
- 1237 ~~Drepanocarpus lunatus (L.) J.F. Mayr.~~
- 1238 Manihot utilissima Pohl.
- 1239 Theophrasta jussiaei Lindl.
(Sw.) Poir.
- 1240 Quararibaea turbinata
Dioscorea polygonoides H. + B.
- 1241 ~~Synedrella nodiflora (L.) Gaertn.~~
- 1242 Heterotrichum umbellatum
(Mill.) Tul.
- 1243
- 1244 Gesneria cuneifolia Lessert.
- 1245 Tectaria
- 1246 Centrosema pubescens Benth.
- 1247 Jussiaea erecta L.
~~Justicia pectoralis Jacq.~~
- 1248 Calonyction aculeatum (L.)
Hornem.
- * 1249 Eupatorium aromatizans DC
- 1250 Manihot utilissima Pohl.
- 1251 Cecropia peltata L.
- 1252
- 1253 Passiflora rubra L.
- 1254 Inga vera Willd.
- 1255 Asplenium salicifolium L.
- * new for Hispaniola in herb.

Mico San Juan March 21

- 1237 "water vine" large
- 1238 vine (fruit in alc.)
- 1239 "wild guava"
- 1240 "molinero"
- 1241 yam
- 1242 large shrub
- 1243 Polyporus March 22
- 1244 on damp rocks
- 1245 fern on limestone cliff
- 1246 pea

March 23

- 1247 yellow
- 1248 moon flower seeds separate
- 1249 large composite
- 1250 vine
- 1251 "troufette" small leaf
- 1252 ?
- 1253 Passiflora fruit in alc
- 1254 tree
- 1255 fern

1256

1257 *Ficus nitida* Thunb.

1258

1259 *Grevillea robusta* A. Cunn.

Without no. *Eupatorium odoratum* L.

" *Gesneria ekmanii* Hutch.

" *Campelia zanonii*

" *Rhobopsis planisiliqua* ^{(L.) Nash}

" *Inga laurina* ^{(Sw.) Willd.}

" *Peperomia nizaioensis*
Det. Paulsen July 1930 C.D.C.

" *Adiantum tenerum* Sw.

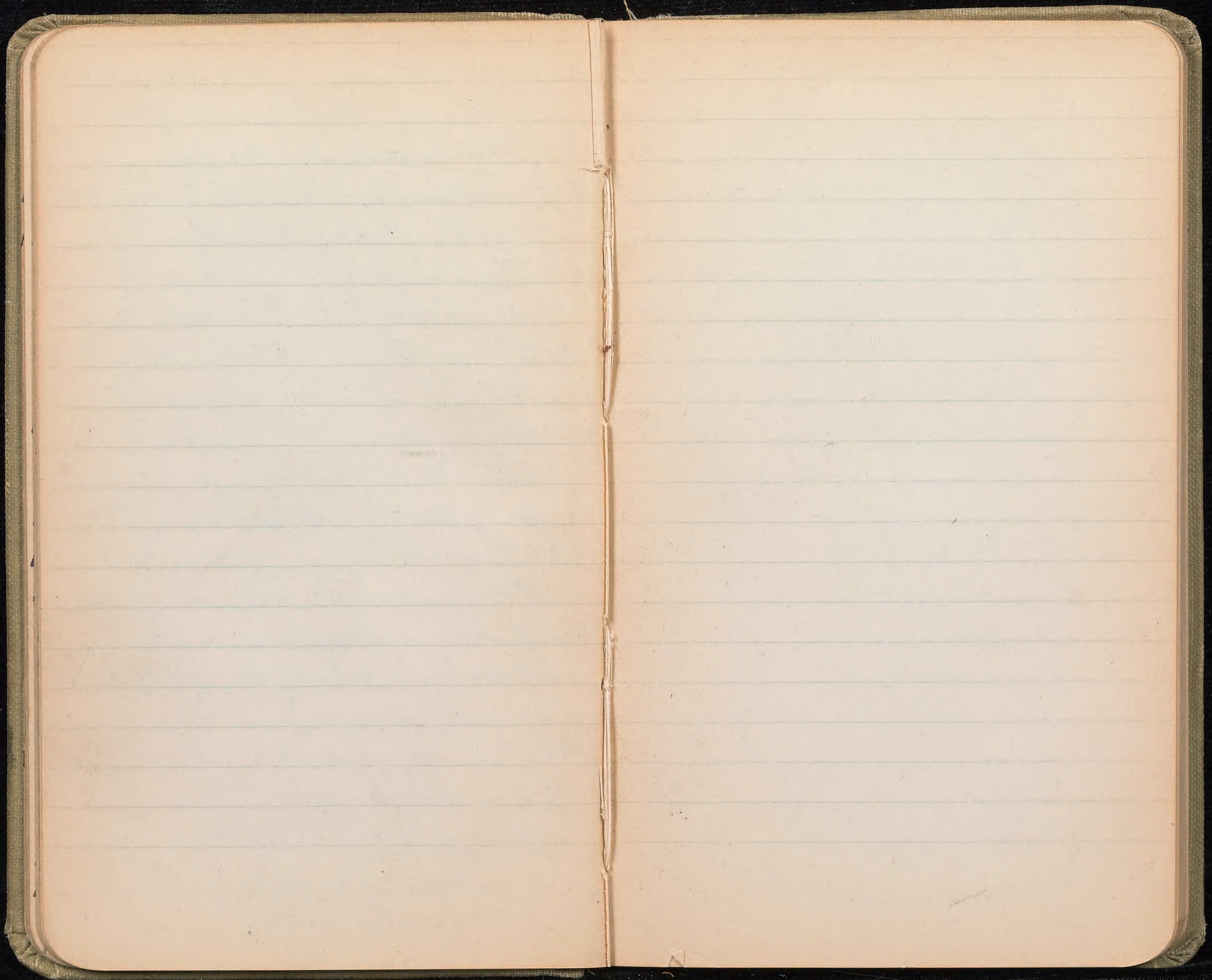
" *Polypodium aureum* L.

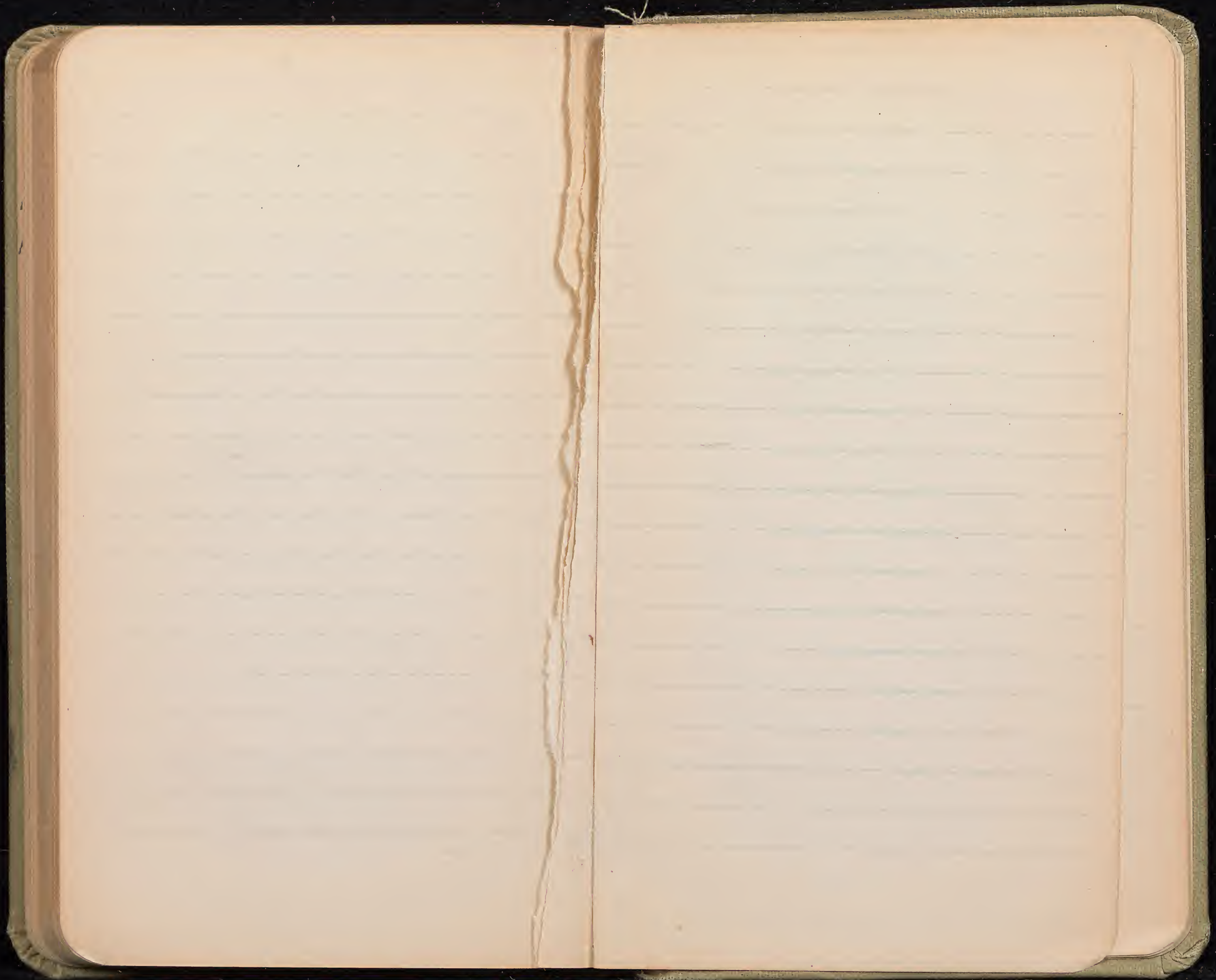
1256 cactus - Mio San
Juan, March, 1928
on limestone cliff.

1257 *Ficus* - Sanchez, March
1928. Large ornamental
tree in grounds of
British Viceconsulate.

1258 cactus - Near Monte-
cristi - Only one of its
kind seen - height
about 25 ft - no flowers
or fruit. April 3, 1928

1259 *Grevillea robusta*
Ornamental tree in grounds
of Harris, in
Montecristi. April 4, 1928





Lygards snakes & frogs - 18/0 -

March

18 - Lygards - green - 45-

- frogs - 35-

2 snakes - 15-

Lygards - green - 60

19 - 1 long Lygards green - 92

Lygards - 70

Lygards - 78 - 10

Lygards snake 10 88

Lygards green 10

10

20 - Snakes - 10

1 long - by frogs - 25-

2 Lygards - 05-

1 Bl. Snake 10 by 10 30

green snake - 10

25 - 10 - 15 - 75 -

Swan - H.T. 25 - 35-

2.50 - 10 - H.T. - 2.50

With account, Samoa, 1925

March 12 - Abraham
food " " 1.00
bird 80
March 14 - A wages = 300p 3.00

March 12-14 Abraham
wages 3.00
bird 2-
book 2

January - March 23

Median length of the between
refractive 2 in 2 dm

Point at front of cornea 1 in 3 dm
eye to ear 65 mm

General section that
with very faint markings

